

# SONUS S-5

RR

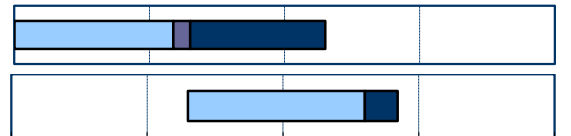
## DATABLAD

FEBRUAR 2020

CDM-RR family:

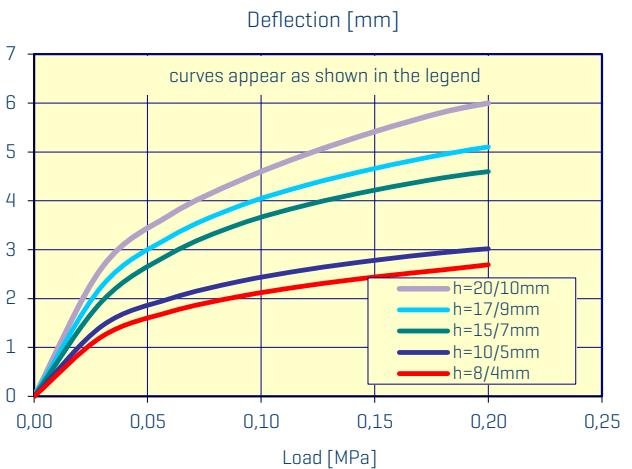
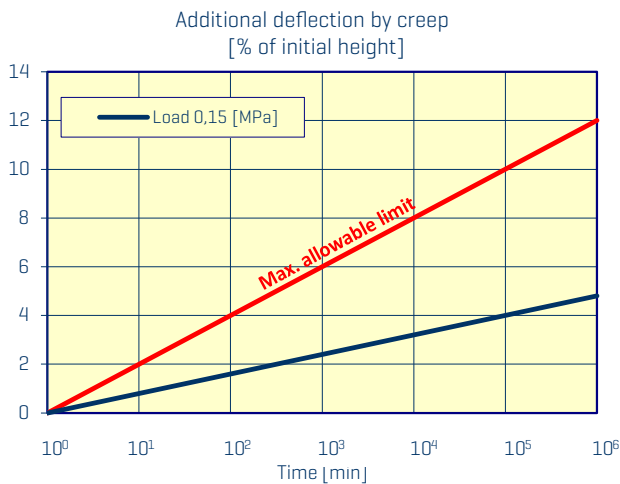
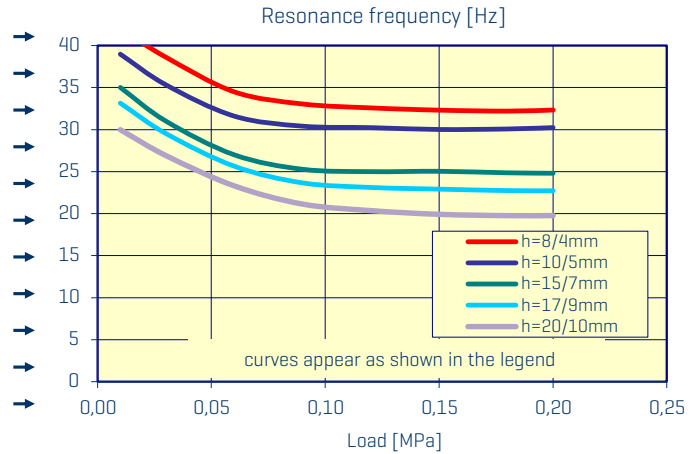
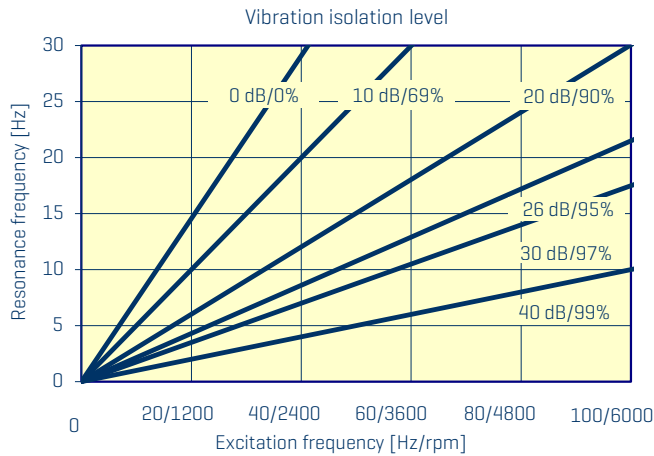
CDM-MTA
  CDM-MTB
  CDM-MTC
  CDM-MTO

Belastningsvidde [MPa]	Statisk	Total	Lejlighedsvis
	0,01 - 0,15	0,20	2,00
E-modul [MPa] [*]	Statisk	Dynamisk	
	0,20 - 4,00	0,60 - 7,00	



\* med hensyn til et belastningsområde omkring 30% af maksimal statisk belastning

0,01 0,1 1 10 100



Materiale	-	Genbrugs gummidæk	Trækstyrke	ISO 37	> 0,4 MPa
Densitet	ISO 845	710 kg/m <sup>3</sup>	Forlængelse ved brud	ISO 37	> 40 %
Farve	-	Sort	Kompression sat 50%/23C°/70t	ISO 815-1	< 10 %
Arbejdstemperatur*	-	-30 / +70 °C	Kant hårdhed	ASTM D2240	40 A

\*kortvarig højere temperaturer kan tillades

Data provided in this document has been collected using tests compliant with internationally recognized test procedures. All data provided is given in good faith using state of the art practices and production tolerances and it may be used for calculation and design purposes. This data cannot be considered a warranty as there may be factors, outside our knowledge and control, which effect the performance of our product and therefore CDM cannot be held responsible for the project specific performance of our product. Please contact CDM technical department for application recommendations. CDM reserve the right to modify our data and product without notice.

Testresultaterne er opnået ved rumtemperatur, ved en prøve med et tværsnit på 300x300mm<sup>2</sup>

